

## Lab sheet 9.4: The Timer Control and Scroll Bar Control

### A. The Timer Control

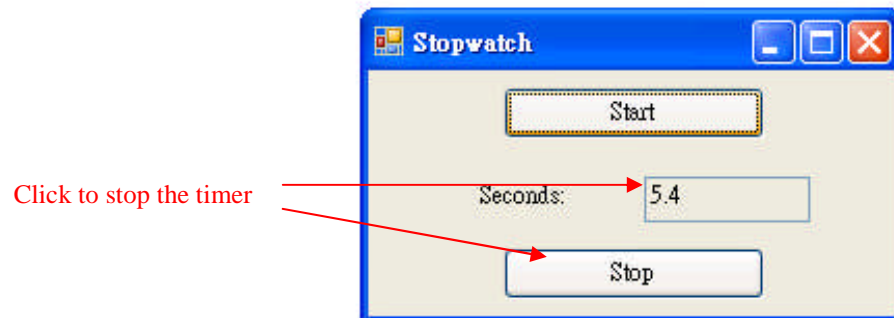
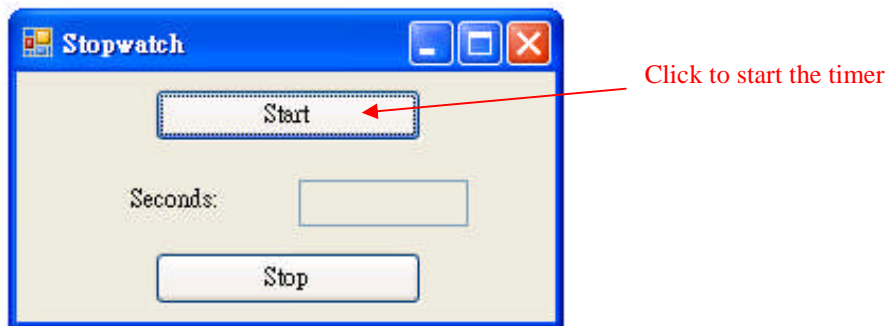
Instructions:

Textbook Chapter 9, page521.

Requirement:

1. Click the “Start” button to start the timer.
2. Click the “Stop” button to stop the timer.

Interface:



## B. The Scroll Bar Control

Instructions:

Textbook Chapter 9, page524-525

Requirement:

1. Use the Scroll Bar controls to move the image to any desired location in the window.

Interface:

